

## INTRODUCTION

The NuPure PCR Cleanup Kit is designed to eliminate primers, unincorporated dNTPs, enzymes, and other impurities from PCR products for downstream applications such as sequencing, PCR, mapping, and cloning. The unique magnetic beads used in this kit feature a high binding capacity, slow sedimentation rate and have been designed to selectively bind PCR amplicons 100 bp and larger without salt carryover.

## HIGHLIGHTS

- **Superior performance** and optimized and designed to match or outperform other competitors.
- **High recovery** yields relative to other magnetic bead-based methods.
- **Scalable** for higher and lower input volumes from 10  $\mu$ l to 1 ml
- **Automation-friendly** with proven adaptability to open-ended magnetic particle processors and liquid handlers.
- **Eco-friendly** with no costly columns required and minimal use of plastics.

## DOWNSTREAM APPLICATIONS

- PCR
- NGS Library Prep
- Fragment analysis
- DNA/RNA Cleanup
- Molecular Cloning

## Efficient PCR Purification and Recovery

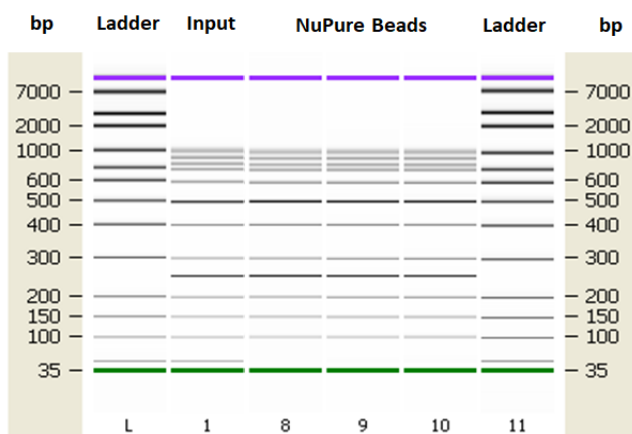


Figure 1. Example of PCR cleanup of DNA fragments using the NuPure PCR Cleanup Kit

The NuPure PCR Cleanup Kit provides efficient exclusion of DNA fragments less than 100 base pairs with reproducibility and consistency.

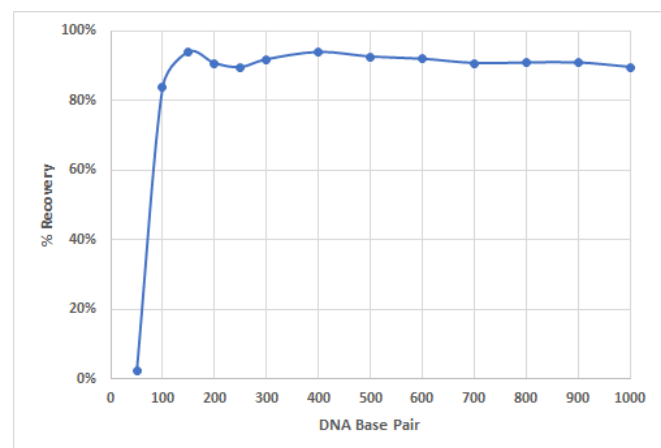


Figure 2. DNA recovery using the NuPure PCR Cleanup Kit

The NuPure PCR Cleanup Kit provide efficient removal of DNA under 100 base pairs, delivering high yields of DNA fragments greater than or equal to 100 base pairs.

## Simple and Quick Workflow

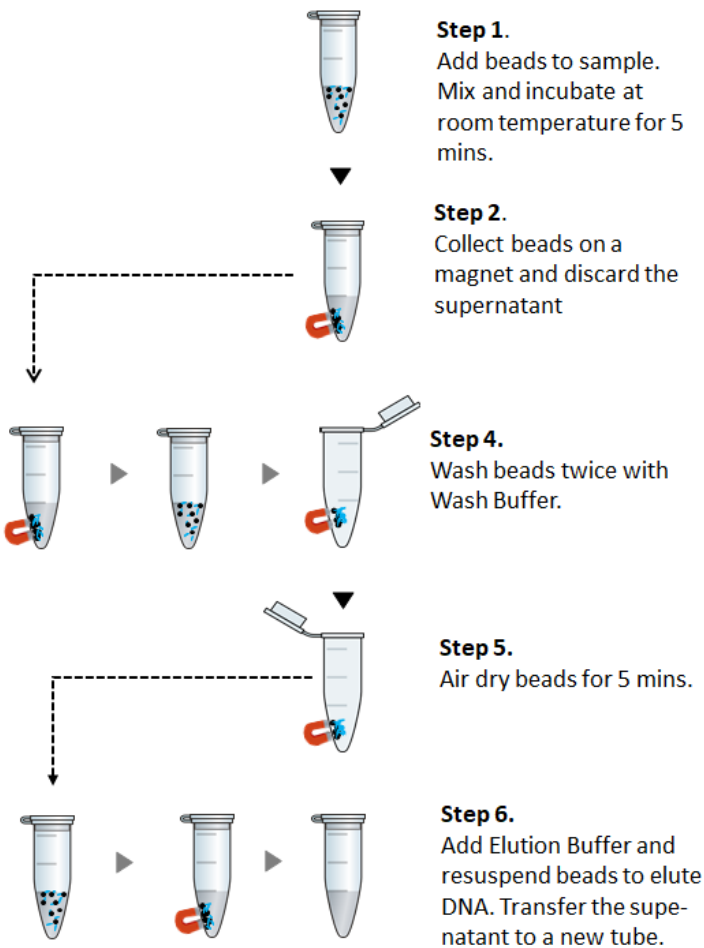


Figure 3. Illustration showing PCR cleanup procedures using the NuPure PCR Cleanup Kit

PCR products are incubated with NuPure beads. The beads bind to PCR products and are easily separated using a magnet. Magnetic separation facilitates simple washing and elution of isolation DNA or RNA.

## Superior Performance

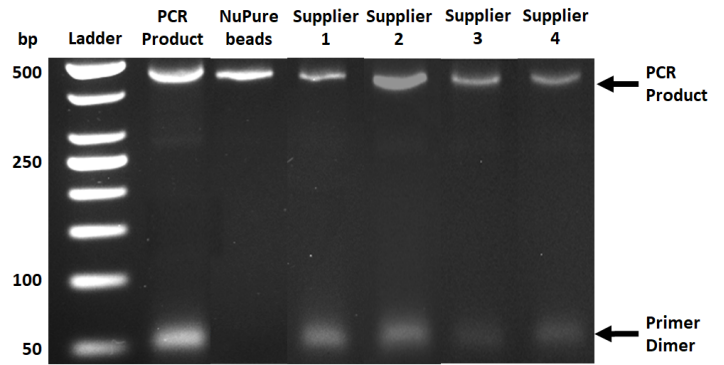


Figure 4. Example of higher quality cleanup and recovery using the NuPure PCR Cleanup when compared to leading competitors

The NuPure PCR Cleanup Kit significantly outperforms other magnetic bead-based PCR cleanup kits in cleanup abilities, recovery, and purity of purified DNA.

## Adaptable to Automated Platforms



Figure 5. Example of applicable automated platforms that are compatible with the NuPure PCR Cleanup Kit

The NuPure PCR Cleanup Kit has been proven to be compatible with the KingFisher Duo Prime System and KingFisher Flex System.